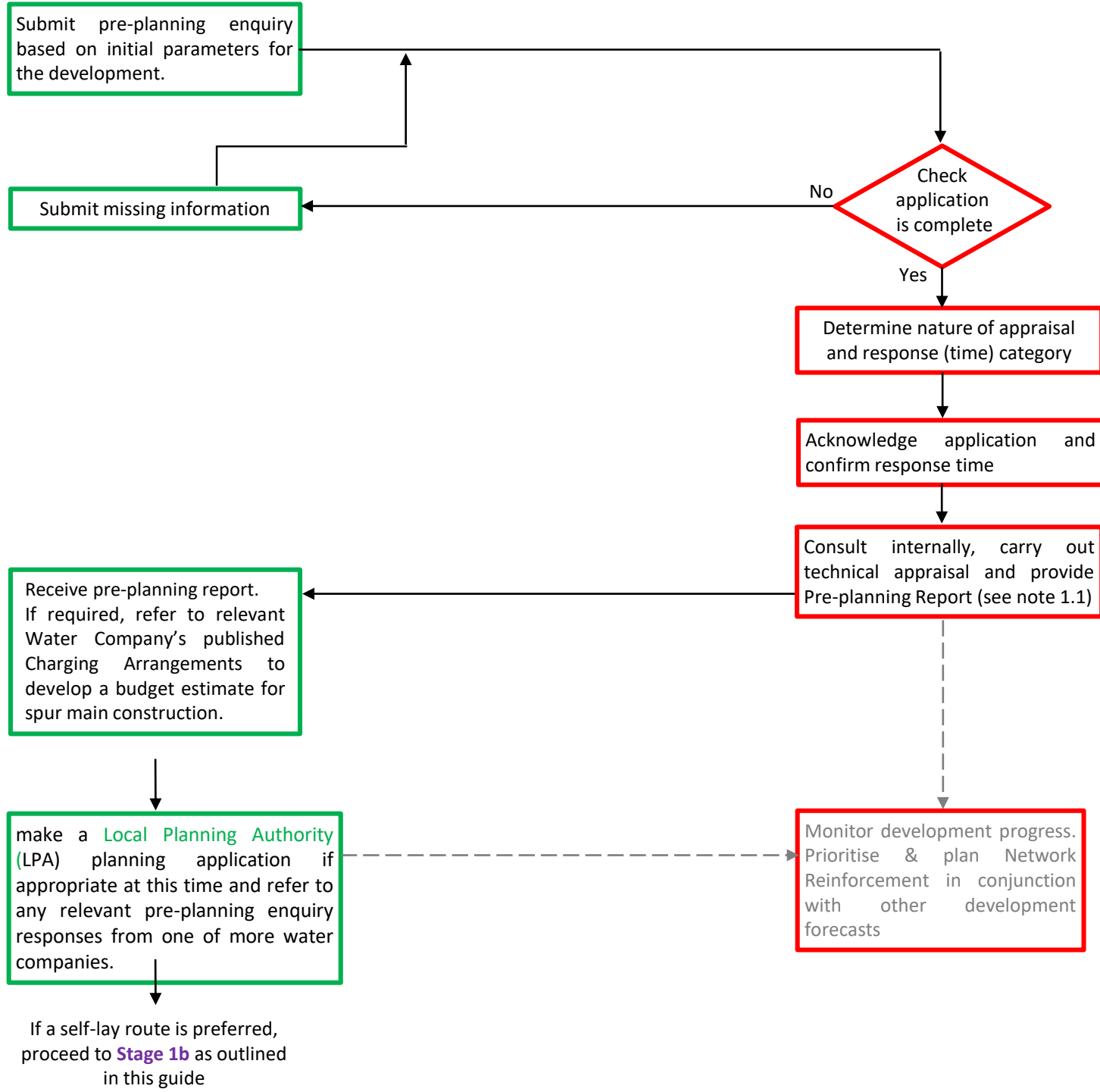
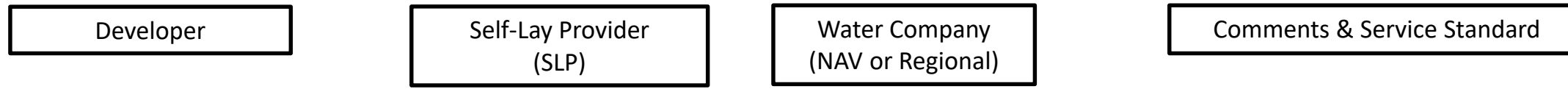


Draft Adoption Procedures – (Version P7)

These Procedures cannot be viewed in isolation and must be read in conjunction with the Water Sector Guidance (WSG) and Model Water Adoption Agreement (**MWAA**). Please refer to the Master Definitions Appendix to the WSG for an explanation of the defined terms used in these Procedures.

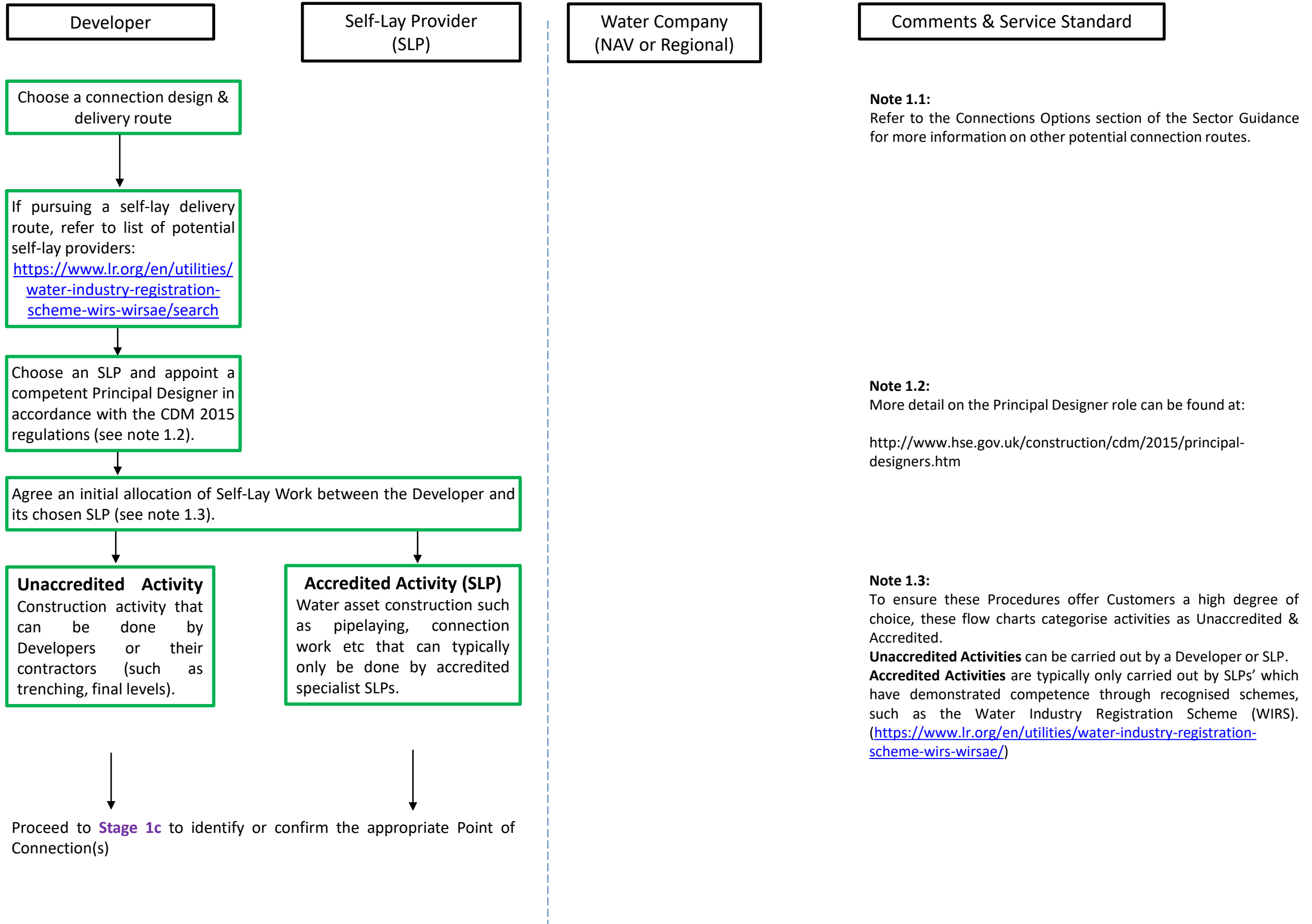
Stage 1a: Pre-planning enquiry (planning liaison)

Version: DRAFT (P7)



Stage 1b: Choose Delivery Route & Allocate Self-Lay Duties

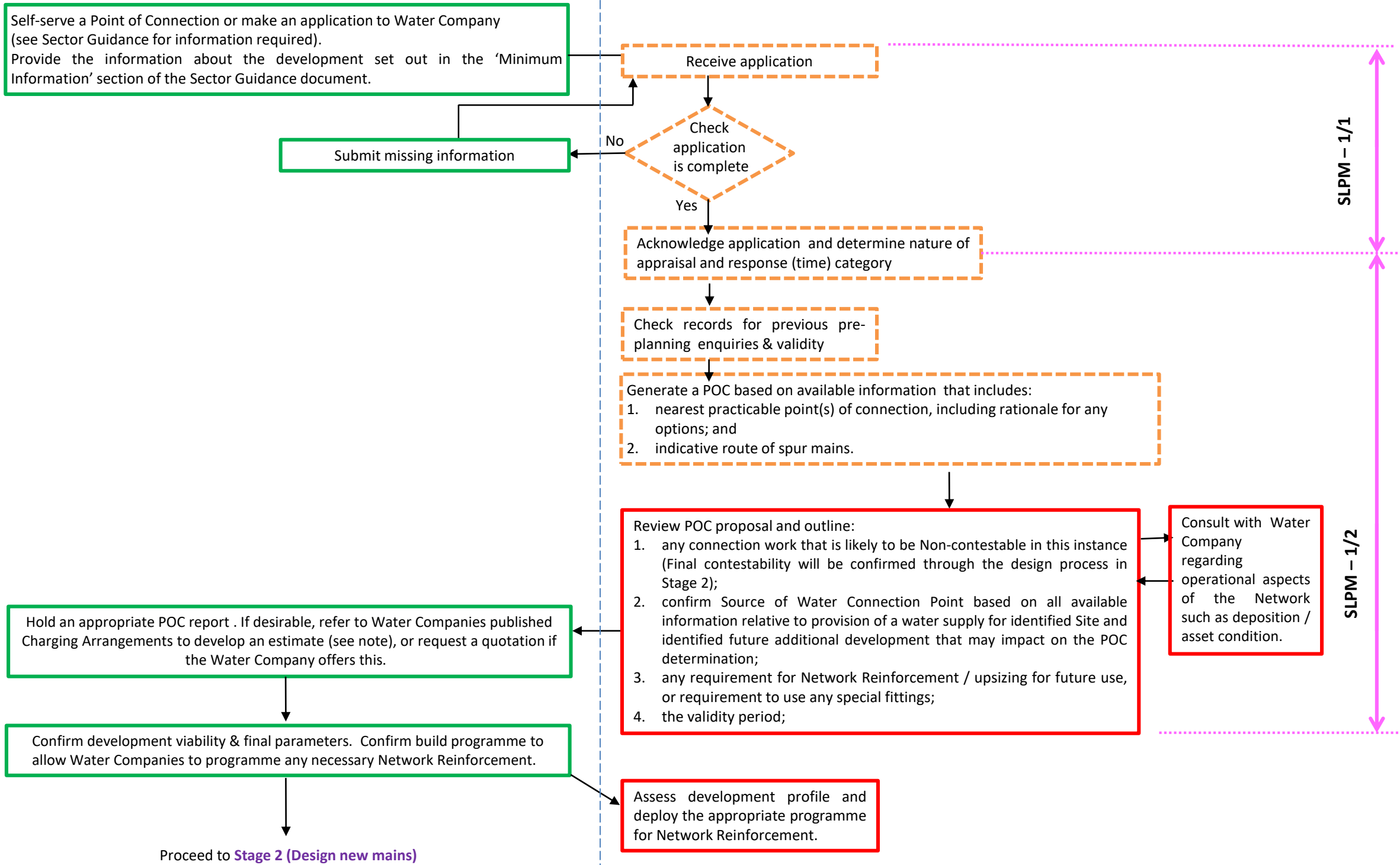
Version: DRAFT (P7)



Stage 1c: Point of Connection (assessment and confirmation)

Unaccredited Activity	Accredited Activity (SLP)	Water Company (NAV or Regional)	Comments & Service Standard
-----------------------	---------------------------	---------------------------------	-----------------------------

This Stage 1c is intended to confirm the point(s) on the existing water supply Network where a Source of Water Connection can be made. It also allows the Developer to determine a reasonable cost estimate “at the outset” for the spur main(s). This Stage will also confirm which elements of the work will be Non-contestable using a table format.



Stage 2: Design New Mains

Unaccredited Activity	Accredited Activity (SLP)	Water Company (NAV or Regional)	Comments & Service Standard
-----------------------	---------------------------	---------------------------------	-----------------------------

The stages explained: (1) develops the detailed onsite mains design in line with the Developer's agreed site layout; (2) refines the design of the spur mains(s); (3) confirms the Non-contestable Work and Services; (4) confirms any requirements for upsizing Self-Laid Mains for future capacity

Utilise Point of Connection Report (See Stage 1c) or a self-served POC

Commission design of Contestable Work and Services (if not already determined as part of POC/pre-development process).

Coordinate design with other utilities and development layout. Commission and share necessary surveys and site investigations.

Carry out accredited design work and request design acceptance (see note 2.1).

Design in scope for an SLP to 'self-certify'

Liaise with Fire and Rescue Service

Request design acceptance and draft Water Adoption Agreement

Submit missing information

Amend design

Check application is complete?

Acknowledge complete request and carry out design work (if service is offered). Consult internally

"clock-start or re-start"

Receive proposed design

Check application is complete

Acknowledge application, and provide Water Company reference. Check design and consult internally

Design to Water Company specification?

Provide design or design acceptance. Refer Customers to published Charging Arrangements or provide a convertible quotation/ revised quotation. Ensure phasing, and Contestable / Non-contestable split is defined.

Receive the design output commissioned via the Water Company (including a quotation), ensure Self-Laid Main design is compatible with Network, and complete integrated design for the Development. Proceed to Stage 3

Note 2.1: Some water companies offer a design service for SLPs, and/or operate a self-certification scheme for design work carried out by others. In this instance, CDM responsibility for design must be made clear as set out in the Water Company's Design and Construction Specification. See Water Company Charging Arrangements for more information.

Note 2.2: Under the Fire and Rescue Services Act 2004, a minimum of 42 days' notice should be given to the Fire and Rescue Authority. The Designer is responsible for all Fire and Rescue Authority Service liaison, and should send copies of the mains design to the Fire and Rescue Authority Service to ascertain if fire hydrants are required. The SLP should send a copy of the Fire and Rescue Services response to the Water Company prior to mains construction starting.

SLPM - S2/1a

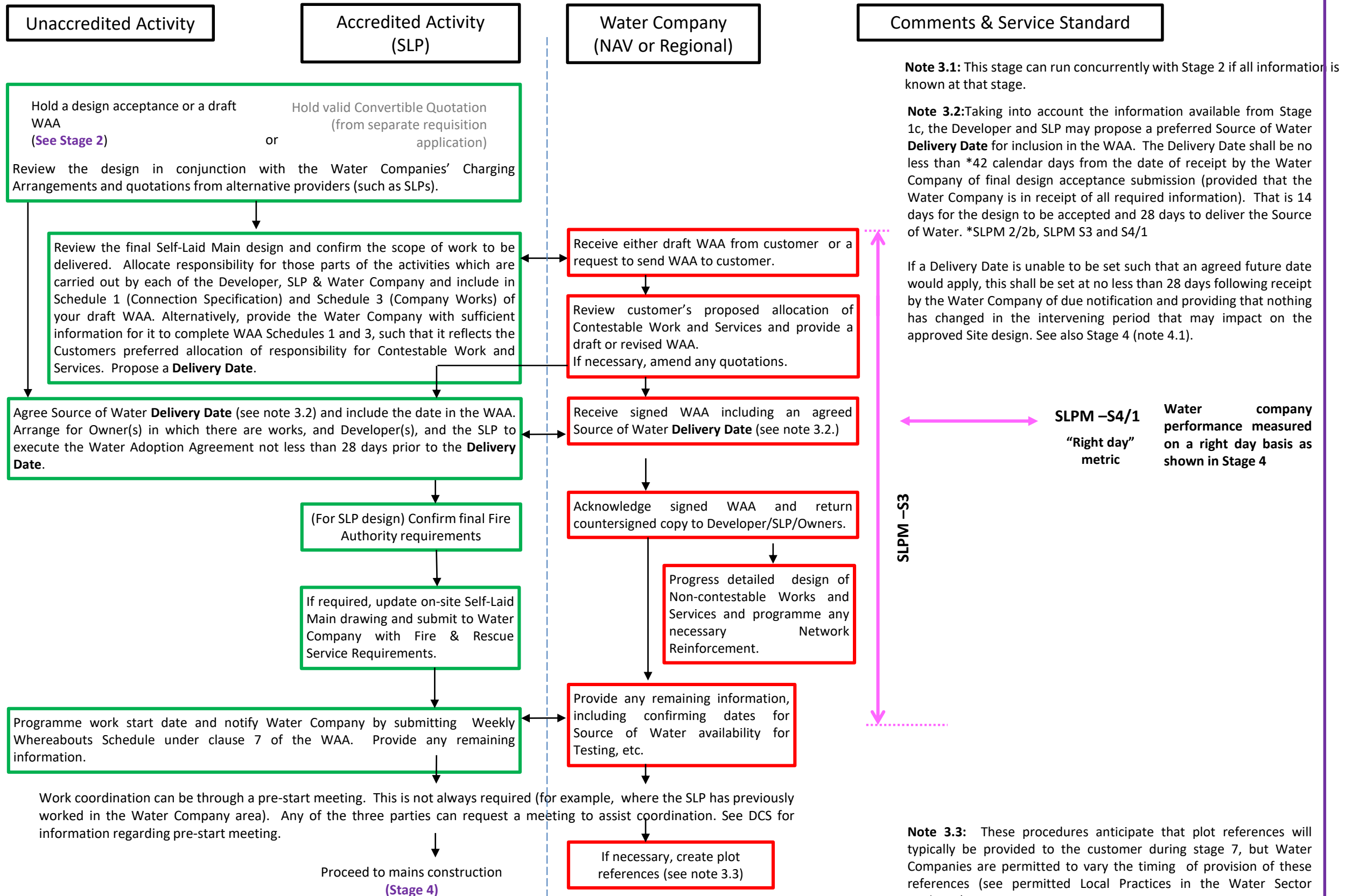
SLPM - S2/2a

SLPM - S2/1b

SLPM - S2/2b

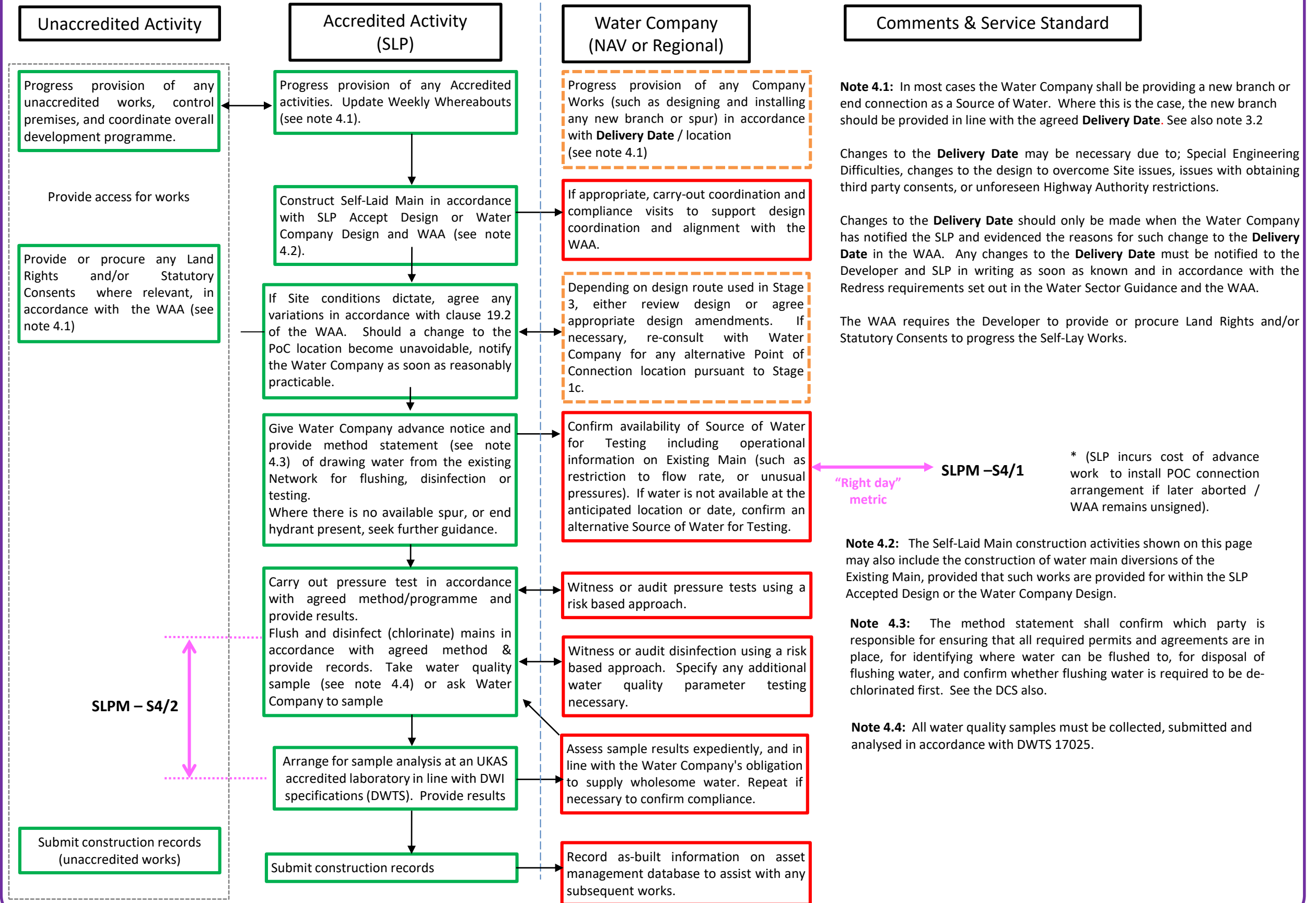
Stage 3: Review design / execute Model Water Adoption Agreement (MWAA)

Version: DRAFT (P8)



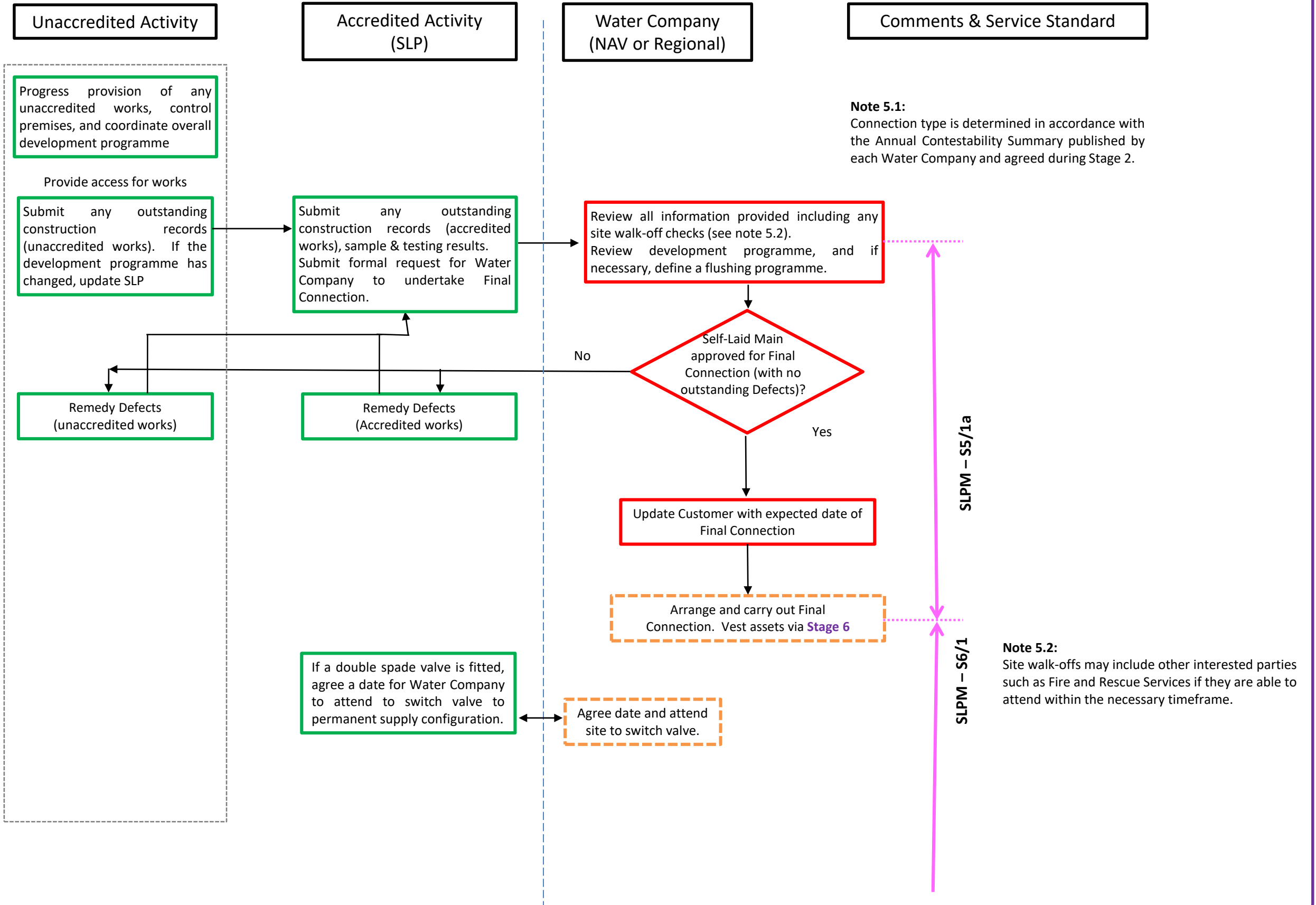
Stage 4: Construct Water Main

Version: DRAFT (P8)



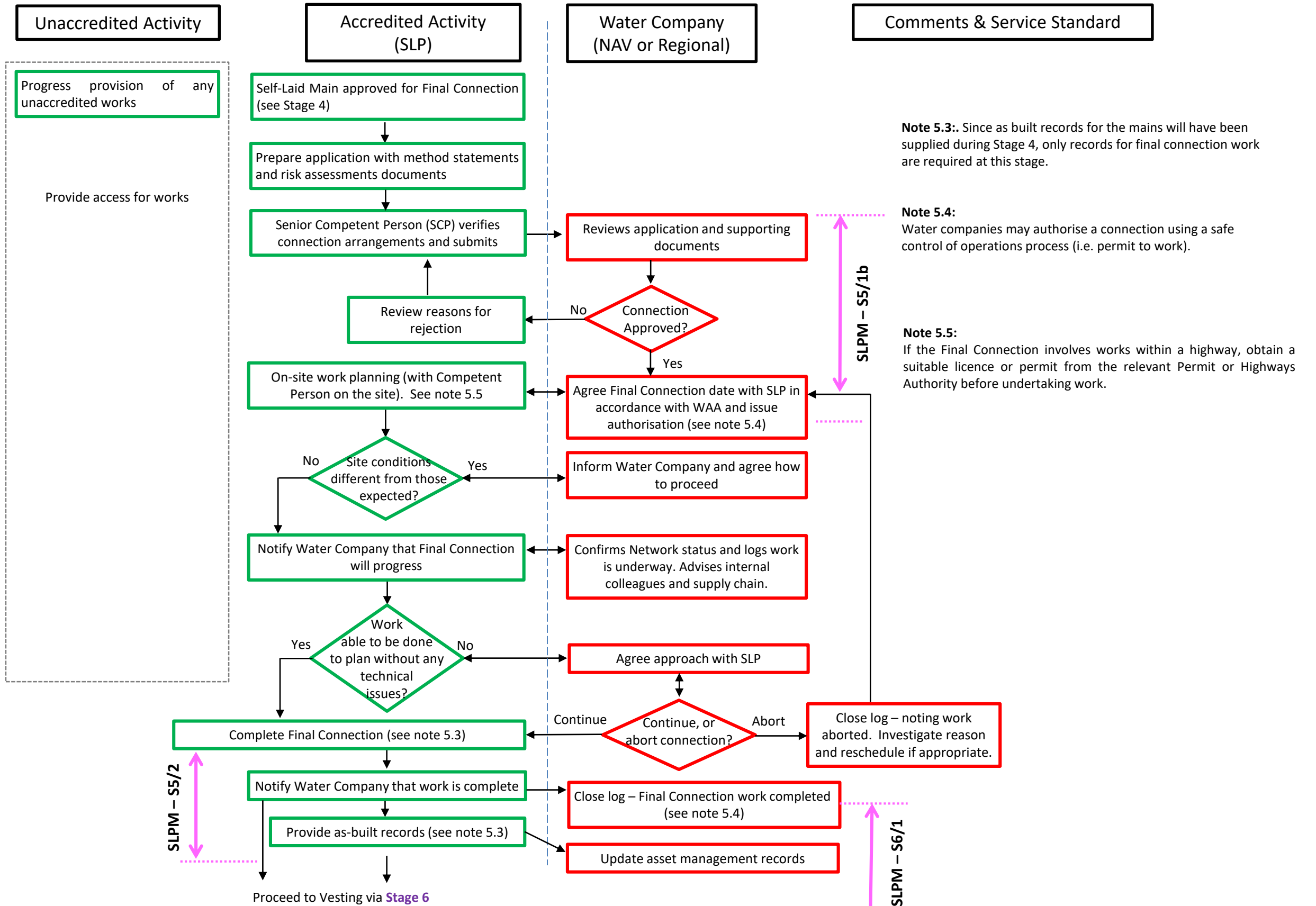
Stage 5a: Connect Water Mains (Water Company to carry out Final Connection)

Version: DRAFT (P7)



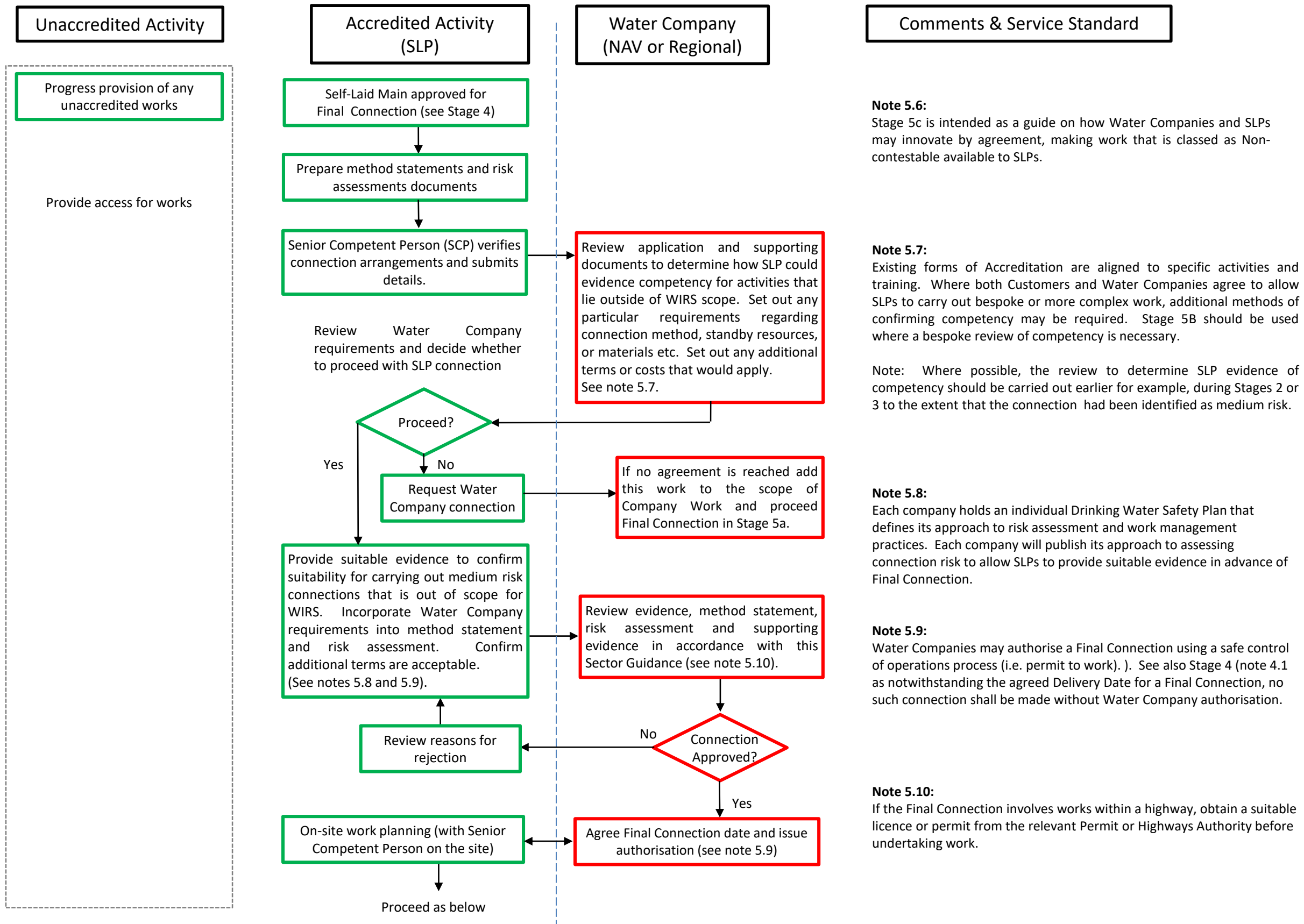
Stage 5b: Connect mains (SLP to undertake Final Connection)

Version: DRAFT (7)



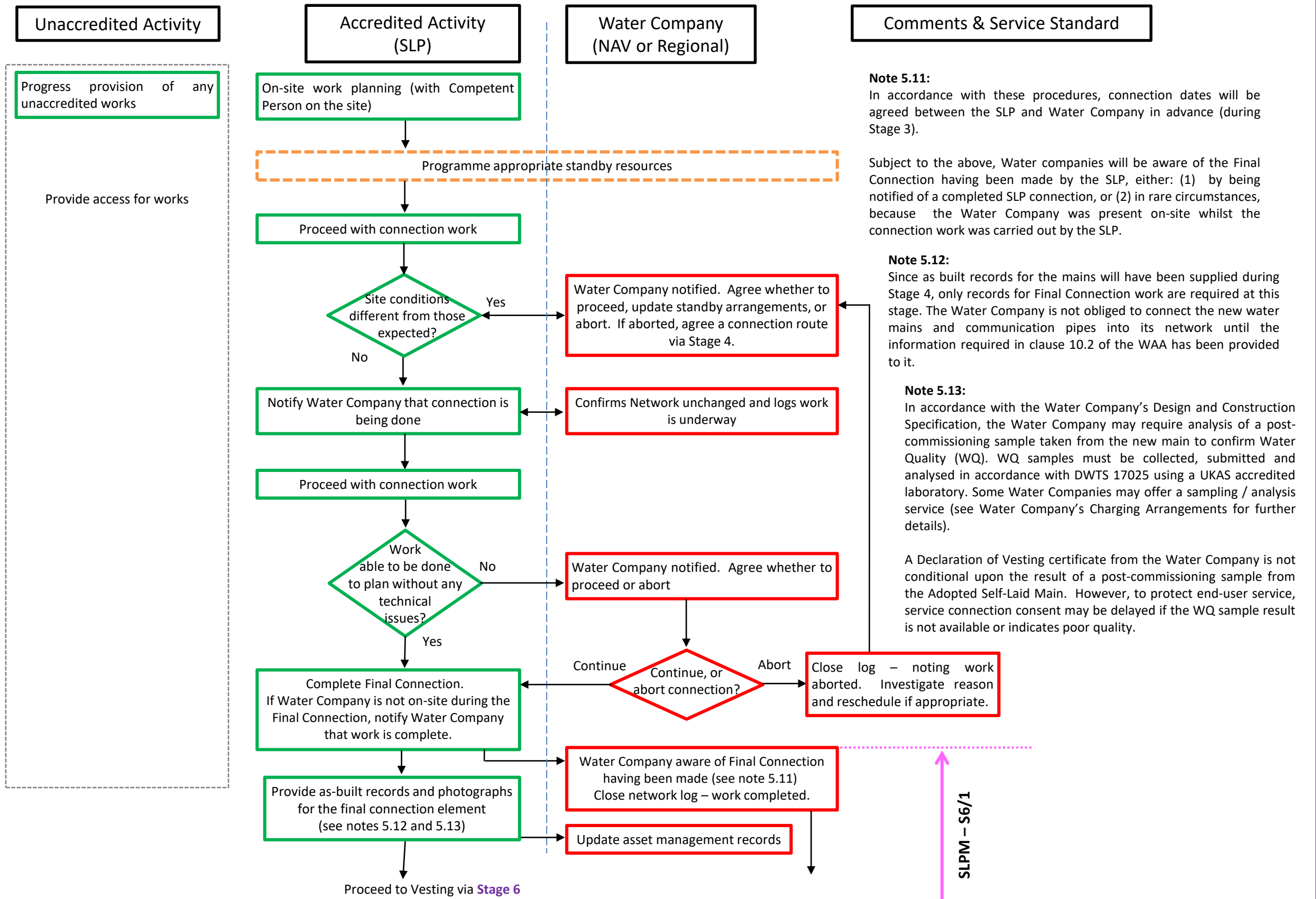
Stage 5c: Connect Mains (Medium or High Risk Connection) (Part 1 of 2)

Version: DRAFT (P7)

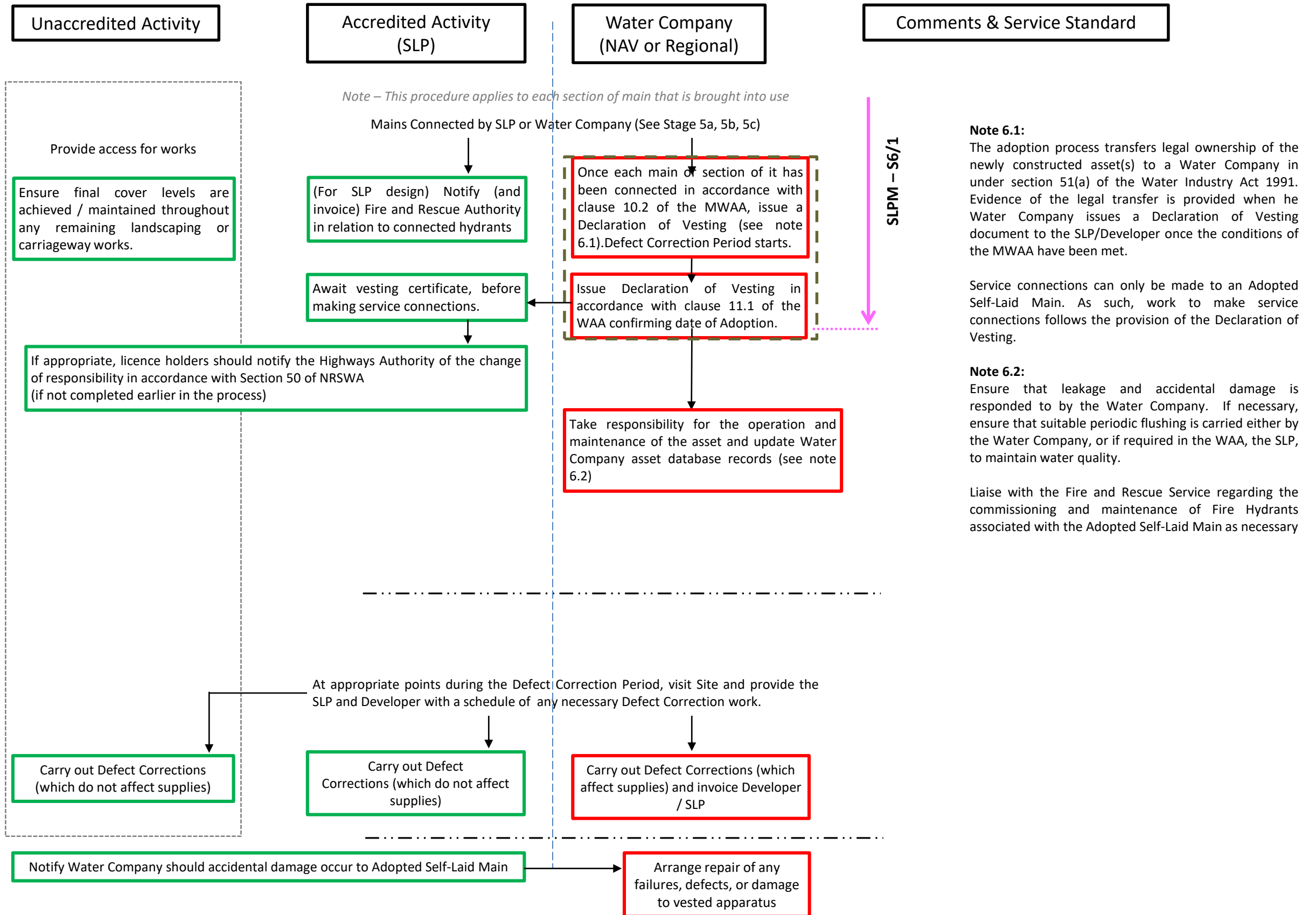


Stage 5c: Connect Mains (Medium or High Risk Connection) (Part 2 of 2)

Version: DRAFT (P7)

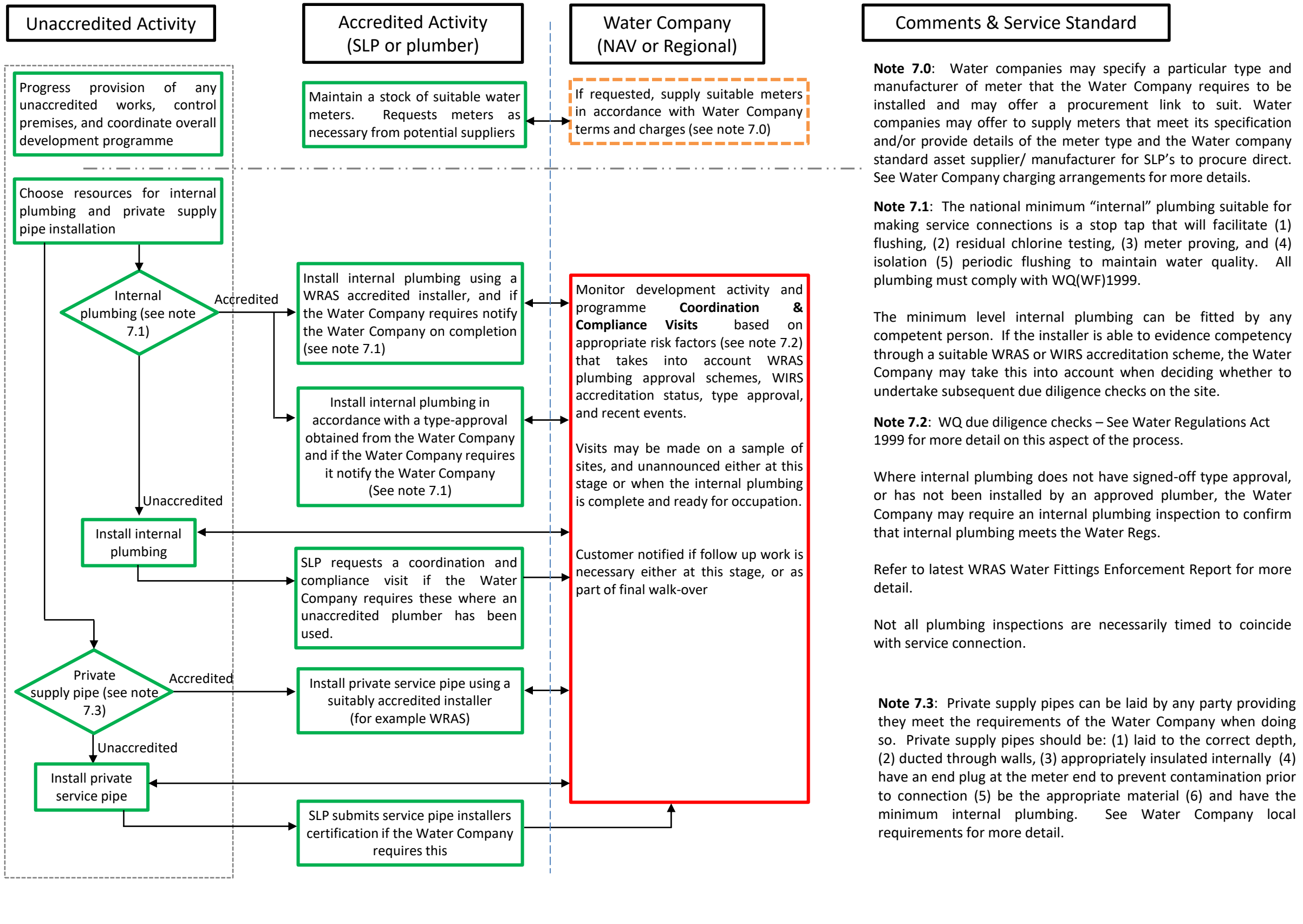


Stage 6: Adopt New Main and Correct Defects

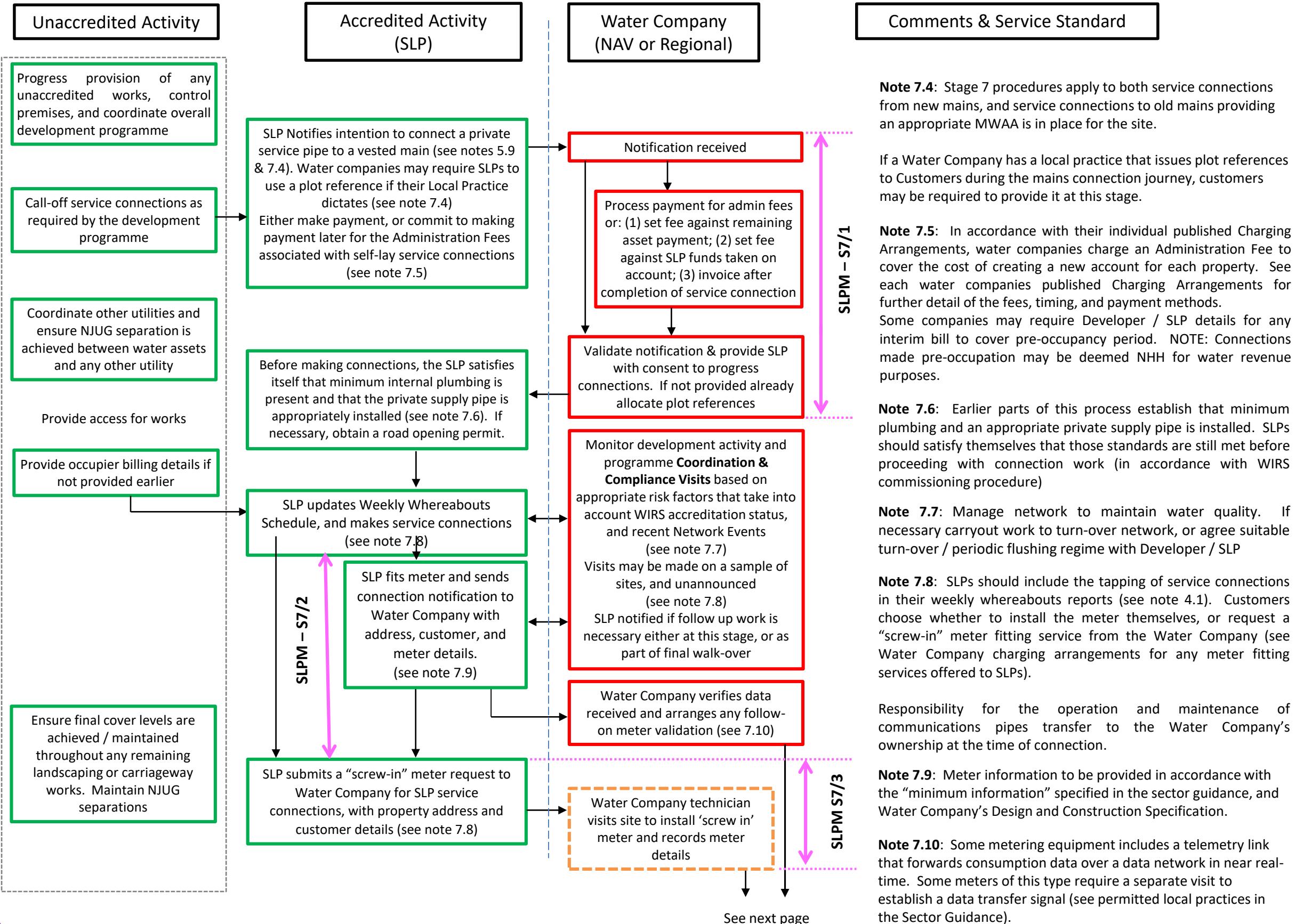


SLPM – S6/1

Stage 7: Make Service Connections (part 1 of 3)



Stage 7: Make service connections (part 2 of 3)



See next page

Stage 7: Make service connections (part 3 of 3)

Version: DRAFT (P6)

