


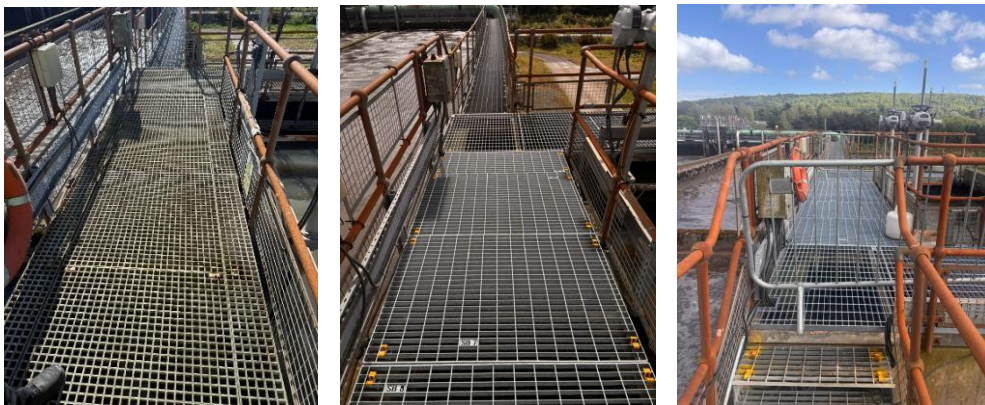
<h1>SAFETY INFORMATION NOTICE</h1>		
Business Author:	Health & Safety Team	June 2026
Title:	<b>Safe Working with Grid Flooring Systems</b>	

## Introduction

Grid flooring systems are used on a large number of NIW sites. It is essential that grid flooring systems are maintained and replaced correctly to ensure the safety of all site users. NIW regularly replace older GRP flooring systems with new galvanised steel grid flooring systems.

**INC- 001120 – NIW Operator reported unsecured grid flooring above SBR distribution chamber on WwTW site. Grid clips had been removed leading the flooring to slide out of place as the operator walked on them. Resulting in a high risk of falling into the SBR distribution chamber below.**

Construction work by NI Water contractor was ongoing at the WwTW. The existing GRP flooring panels had been removed to facilitate their replacement with new galvanised open mesh flooring. Following removal of the GRP flooring, the contractor determined that the new galvanised panels required further alteration off site. The contractor therefore reinstated the original GRP flooring on a temporary basis; however, it was not fully or securely fixed in place. During the removal process, the original fixing bolts were cut off and subsequently discarded, resulting in a significant number of fixing clips being unavailable. The NI Water Plant Manager identified the issue and reported it to the contractor immediately. The area was subsequently barriered and taped off to prevent access and mitigate any associated risk.



## Key learning from this event

- Check designs and materials pre-works to make sure they are suitable for use.
- Grid flooring systems must only be installed or reinstated when securely fixed using the appropriate clips provided. All clips must remain clearly visible at all times and, where practicable, should be coloured yellow to aid identification.
- Instruct your staff to think about the safety impact on others. Dynamically risk assess their work areas and ensure all work areas are barriered off with warning signage installed or left safe for access at end of each shift.
- If you encounter unsecured grid flooring on a site with clips missing, never walk on them. Stop, secure the area and report the issue.
- Report concerns to Line Managers and Site Managers.
- Report any incidents or safety observations via Assure.

 **Stay Safe - Zero Harm**