

Date 01 October 2024

No 205

Title Telehandler Overturn Incident

Issued to all: Colleagues involved with lifting activities

Prepared by: Chloe Townsend & Geraint Michael

If you are a manager, please ensure that your team members are aware of the content of this bulletin.
Additional information or guidance required on the content is available from the Health, Safety and Wellbeing team.

Actions:

All colleagues involved in lifting operations, irrespective if they are as part of their role or as part of a contractor activity, must adhere to the following safety guidelines:

- A thorough lifting plan must be developed and agreed before any lift. Ensure the plan covers all risks, including ground conditions, load weight, and boom extension limits.
- Confirm that all team members are briefed on the plan and understand their roles.
- All lifting equipment must comply with the Lifting Operations and Lifting Equipment Regulations (LOLER).
- Ensure regular inspections are carried out on lifting equipment, and all lifting machinery must be certified and fit for purpose.
- Comprehensive Risk Assessments and Method Statements (RAMS) must be conducted before any lift.
- Pay special attention to factors such as boom extension, load distribution, and machine stability.
- Ensure all operators are trained to understand the risks associated with over-extending booms and reversing with suspended loads.
- Operators must be fully trained and competent in using the specific machinery for lifting operations, especially in situations involving extended booms.

Incident:

A contractor was working at Nash WwTW on the primary settlement tank due to sludge blockages. The work involved the removal of sludge scrapers, which the operational team agreed to undertake using the telehandler. Two initial lifts were completed without any issues. During the third lift the scrapers touched the PST wall, and the telehandler reversed back to enable the load to clear the wall. At this point the boom was fully extended. This caused the unit to become unstable the front right wheel lifted, the operator / IP tried to retract the boom to counteract the tip but could not do it in time and the vehicle toppled over.

Background:

The work to remove the scrapers was being carried out by a framework contractor (ERIKS) and the work was being managed under HSP 805 (Management of contractors) and the CTR process. DCWW operations successfully removed a quantity of scraper blades on two previous occasions, however this is not a normal operation that our colleagues would be expected to undertake.

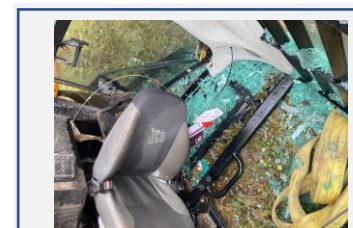
No risk assessment or lifting plans were in place for this aspect of the works. Something that we would have expected if the contractor was undertaking this on our behalf.

Conclusion:

This incident serves as a reminder of the potential hazards in lifting operations, especially when proper planning, risk assessments, and equipment handling procedures are not strictly followed. These are important if we are undertaking routine lifting tasks or undertaking tasks as part of a contractor activity

Going forward, it is crucial that all teams ensure competency of those undertaking lifts, that lifting plans are in place, and RAMS are thoroughly assessed and understood by all involved.

Supporting images:



Safety Takes
Every Person



Date 22 Sept 2023

Title

Attended by:

Date:

Name:	Signature:	Employee number:

Issues raised:

Solutions:

Notes:

Remember to place completed forms in your unit assessment folders.



Safety Takes
Every Person