

April 2007

## **Changes to the approval process for the *in-situ* resin lining of water mains**

### **Background**

The following document explains the recent changes that have occurred to the approvals process for the activities of *in-situ* lining of water mains, from 1 April 2007.

The industry has seen significant activity associated with the rehabilitation of water mains with approximately 1700km per annum across the industry at an estimated cost of circa £100m. It is important that this activity continues as a vital and economic technique to maintain assets and secure safe and clean drinking water for our customers.

The *in-situ* lining of water mains is recognised as being an activity which has the potential for significant water quality impacts. As such it is managed through the setting of approval conditions by the Drinking Water Inspectorate (DWI).

*In-situ* applied lining products, approved for use by the Secretary of State, are to be applied in accordance with strict documented operational requirements and a code of practice.

In Regulation 31 letter (03/2005) the DWI informed the water industry of the updated operation requirements (OR) and code of practice (CoP) for *in-situ* resin lining of water mains. The effect of the communication was that from 1 April 2007 all water suppliers should apply coatings in accordance with the updated OR in order to comply with Regulation 31(10)(b).

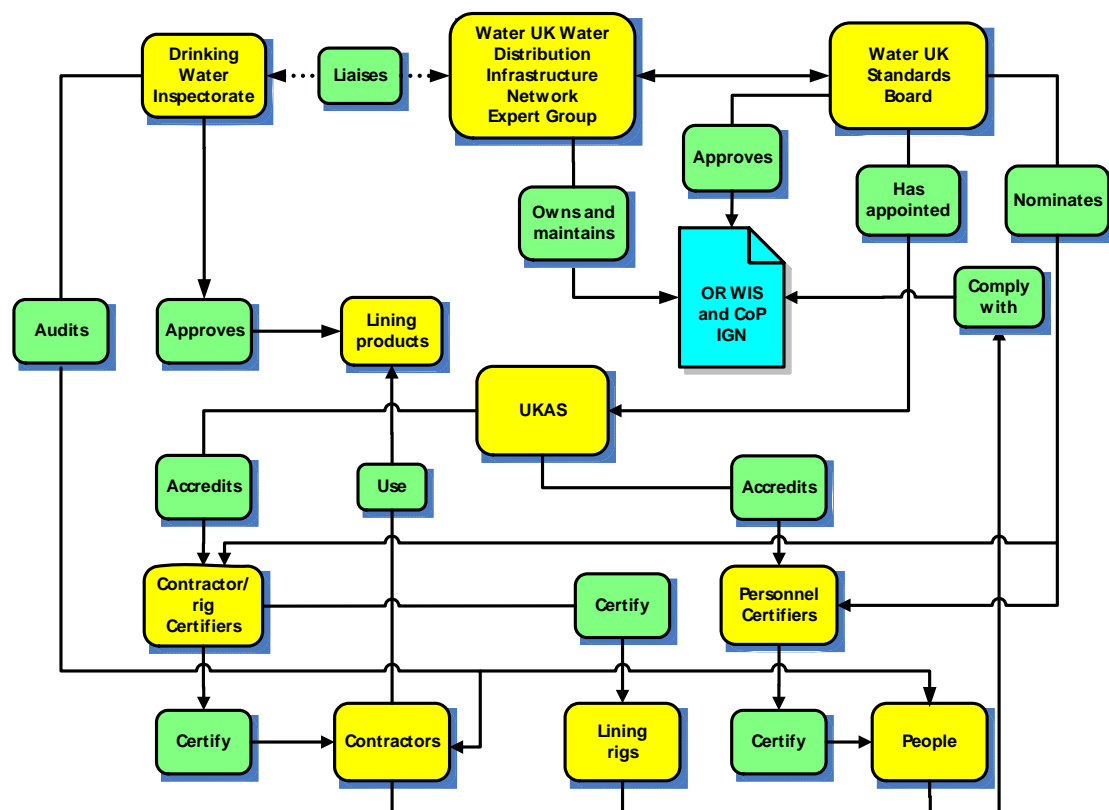
DWI also issued an Information letter (9/2006) which passed to the water industry the responsibility for the ownership and maintenance of the OR and the CoP and for the design and management of a process and procedures to ensure that *in-situ* resin lining of water mains did not affect water quality.

### **The position from 1 April 2007**

From 1 April 2007 Water UK Standards Board have been given the responsibility by the water industry through Water UK to approve a

Water Industry Specification (WIS 4-02-01) to replace the OR and an Information and Guidance Note (IGN 4-02-02) to replace the CoP. An Expert Group of Water UK's Water Distribution Infrastructure Network (WDIN-EG) now owns and maintains these documents.

The following discussion sets out the position from 1 April 2007 regarding the maintenance of the WIS and IGN together with the process put in place by Water UK to meet the requirements of its members and the DWI to ensure that *in-situ* resin lining of water mains does not affect water quality. Figure 1 shows the major players (in yellow) and the relationships between them (in green). The situation of the WIS and IGN (in blue) is also indicated.



**Figure 1: Approval process for in situ resin lining of water mains**

Existing Certifiers of contractors, lining rigs and people have until 31 December 2007 to gain accreditation by the United Kingdom Accreditation Service (UKAS) of their certification processes; during this time their existing nomination by the DWI as certifiers will be recognised by Water UK Standards Board. Contractors, lining rigs and people who currently have valid certificates will continue to be certified so long as it has been demonstrated to their certifiers that their quality systems and procedures comply with the WIS and the IGN and that people have

received a written guide to and awareness training of the requirements of these documents. It will be a requirement for new certification bodies seeking nomination that they become accredited by UKAS.

WIS 4-02-01 and IGN 4-02-02 have been made available on the Water UK WIS and IGN website at <http://www.wis-ign.org/> the documents may be downloaded free. There are no significant changes between the wording of the IGN and the CoP but the following changes have been made in the WIS compared with the OR:

- Accreditation by UKAS of Nominated Certification Bodies and Personnel Certifiers is required.
- The process of approval by Nominated Certification Bodies and Personnel Certifiers is referred to as certification and not accreditation.

### **Future activity**

On 8 May 2007 Water UK will use the UKWIR DOMS workshop to brief the industry regarding the changes to the OR and CoP and the revised nomination and accreditation processes.

By 30 September 2007, the WDIN-EG, in liaison with the DWI will review the WIS and the IGN and recommend any amendments required to the Water Standards Board. The existing Water UK process for the revision of WISs and IGNs will be used for this review.

By 31 December 2007 UKAS will undertake the accreditation of the existing Nominated Certification Bodies and Personnel Certifiers.

### **References**

WIS 4-02-01 – Operational requirements: *in situ* resin lining of water mains

IGN 4-02-02 – Code of practice: *in situ* resin lining of water mains

Both documents available at: - <http://www.wis-ign.org/>

List of Approved Products and Processes December 2006 (to be updated).  
Appendix 3. - <http://www.dwi.gov.uk/31/pdf/soslist06.pdf>

DWI IL 9/2006 - Update on the *in-situ* resin lining of water mains under Regulation 31 (10) (b) of the Water Supply (Water Quality) Regulations 2000 (2001 Wales) -

<http://www.dwi.gov.uk/regs/infolett/2006/info0906.shtm>

DWI Regulation 31 letter 03/2005 - Notice of intention to modify conditions of approval of in situ coatings

## **Contact**

Contacts on this matter should be addressed in the first instance to [jmarshall@water.org.uk](mailto:jmarshall@water.org.uk)